

## MD SERIES - SPECIFICATION DATA SHEET 1.4



[www.kirkkey.com](http://www.kirkkey.com)

Luft Brasil Ind. Com. Ltda

R. Dom Andrés Lamas, 56

Tataupé São Paulo - SP

(11) 3795-0000

[www.luftbrasil.com.br](http://www.luftbrasil.com.br)



### Type D - Door Mounted (Detachable)



A Type D door interlock has two parts: a main body with one or more cylinders and a latch block. The main body is typically attached to a door or hatch that swings open. The latch block is typically bolted to the door frame. When the key is turned and the door is opened, the main body and latch block are separated causing the key to be trapped and the locking bolt to be held in the withdrawn position. The key is always held in the Type D interlock whenever the two parts are separated. When the door is properly closed, the lock body seats fully against the latch block, releasing the locking bolt. The operating key can now be rotated to extend the locking bolt into the latch block. After the locking bolt is fully extended, the operating key may be removed. The interlock housing and latch block are made from brass. The lock bolt is made from 5/8" diameter 316 stainless steel.

#### OPTIONS

- Key Removable - a single cylinder Type D interlock is always built key removable "E", which means the key is released only when the lock bolt is extended into the latch block (door closed).
- Multi-Cylinder - up to 3 cylinders available. A multi-cylinder Type D requiring all keys to unlock the door should have each cylinder designated "E". Any cylinders that are designated "W" will release a key when the door is unlocked - such as a personnel key. Note that MD Series Type D interlocks with "W" keys will be built with the "W" keys located nearest the locking bolt. ("W" keys are trapped when the door is locked - "E" keys are trapped when the door is unlocked.)

## MD SERIES - SPECIFICATION DATA SHEET 1.4



[www.kirkkey.com](http://www.kirkkey.com)

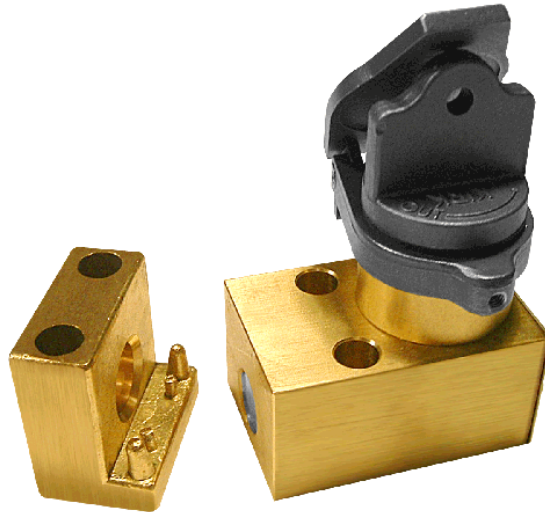
Luft Brasil Ind. Com. Ltda

R. Dom Andrés Lamas, 56  
Tataupé São Paulo - SP  
(11) 3795-0000

[www.luftbrasil.com.br](http://www.luftbrasil.com.br)



### Type D - Door Mounted (Detachable)



#### OPTIONS (Continued)

- Stamp Key Interchange - specify an alphanumeric code to be stamped on the cylinder face and the key (e.g. A1, A2, B1, etc. - up to 5 characters). See MD Series Data Sheet for Keys (3.4) and Terminology (4.1) for details.
- Auxiliary Switches - see MD Series Data Sheets for Type Thermoplastic (2.3) and Type S (2.4) for details.
- Dust Covers - see MD Series Data Sheet for Dust Covers (3.1) for details.
- Mounting Bolts - see MD Series Data Sheet for Mounting Bolts (3.2) for details.
- Adapter Plate - an adapter plate can be fastened to the housing to allow front mounting. See drawing on page 3 of this data sheet, as well as the MD Series Data Sheet for Adapter Plates (3.3).

# MD SERIES - SPECIFICATION DATA SHEET 1.4



www.kirkkey.com

Luft Brasil Ind. Com. Ltda

R. Dom Andrés Lamas, 56

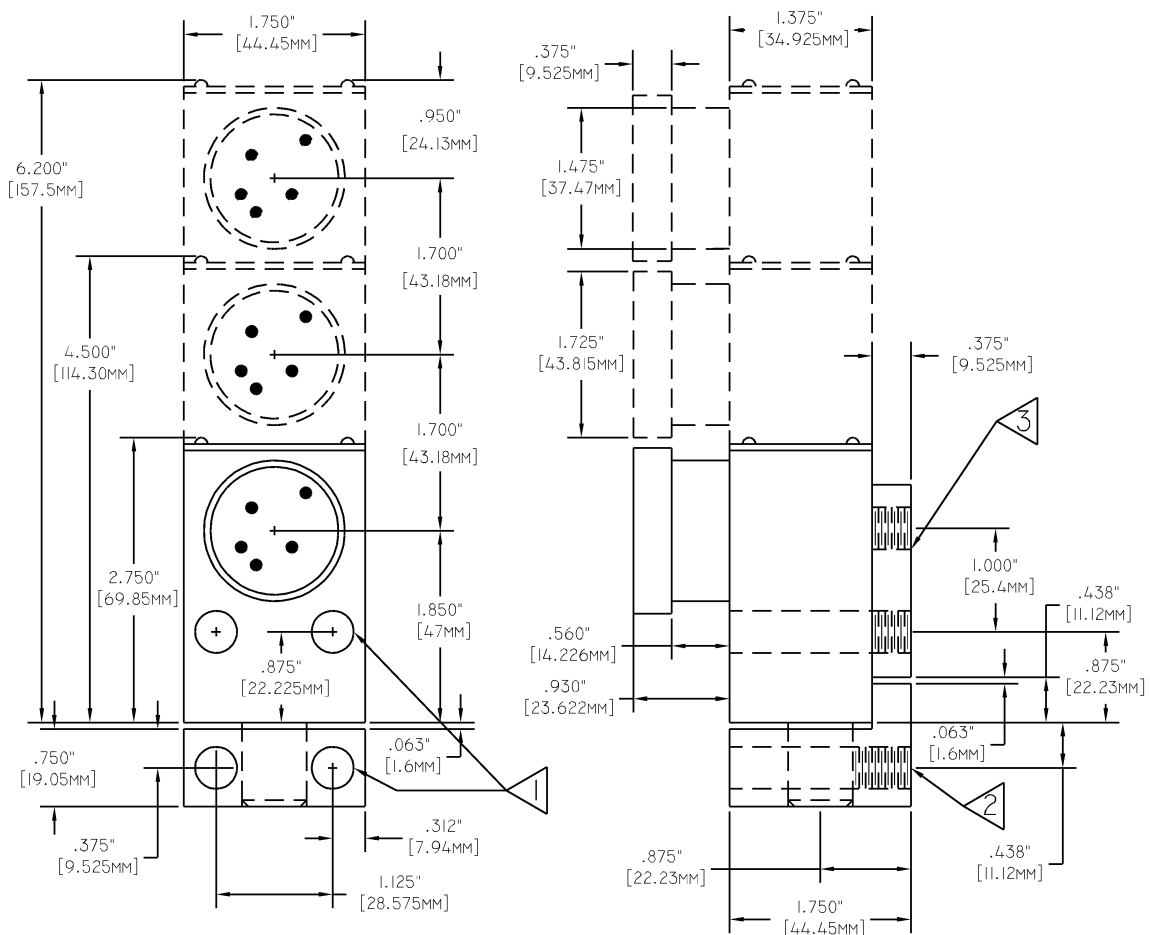
Tataupé São Paulo - SP

(11) 3795-0000

[www.luftbrasil.com.br](http://www.luftbrasil.com.br)



## Type D - Door Mounted (Detachable)



### NOTES:

- 1) 0.4062" (10.32mm) holes for mounting bolts.
- 2) 1/2-13 thread tapped 1/2" from bottom.
- 3) Optional adapter plate shown (see MD Series Data Sheet 3.3 for details).

Caution: The Type D interlock should not be used to align the door, or to be the latching means for holding the door in the closed position.

# MD SERIES - SPECIFICATION DATA SHEET 1.4



[www.kirkkey.com](http://www.kirkkey.com)

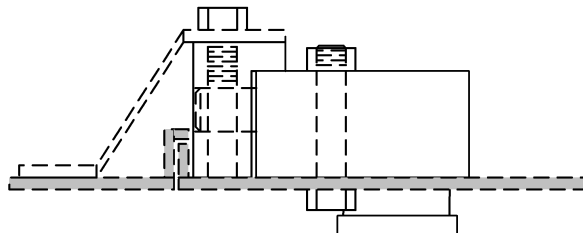
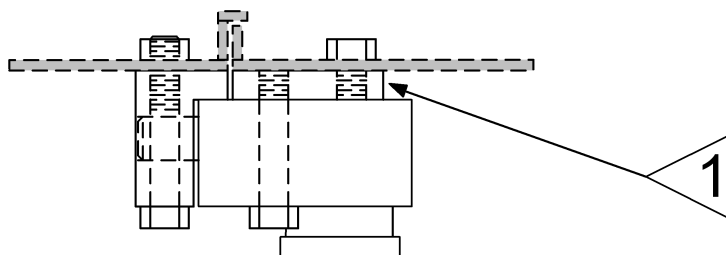
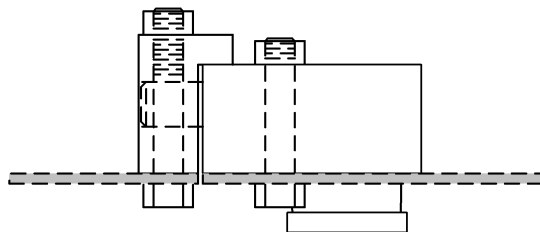
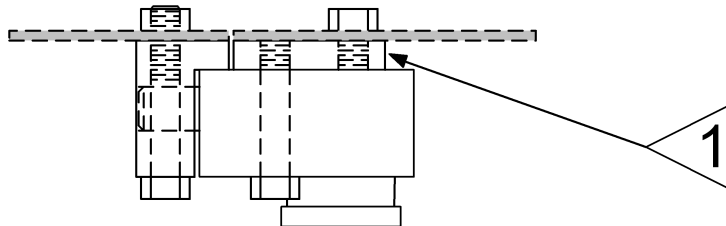
Luft Brasil Ind. Com. Ltda

R. Dom Andrés Lamas, 56  
Tataupé São Paulo - SP  
(11) 3795-0000

[www.luftbrasil.com.br](http://www.luftbrasil.com.br)



## Type D - Door Mounted (Detachable)



### NOTES:

1) Shown with optional adapter plate. The Type D interlock can be mounted on either flat or reinforced doors (front and back mounted). See MD Series Data Sheet for Adapter Plates (3.3) for more details.